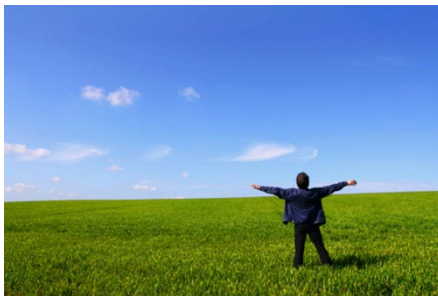


## WP3 Human-environmental interaction: perception, adaptation and mitigation



Olivier Chanel<sup>1</sup> and Sylvie Thoron<sup>2</sup>  
January 7<sup>th</sup>, 2016

---

1 CNRS, Groupement de Recherche en Economie d'Aix-Marseille (GREQAM), AMSE.

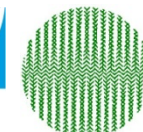
2 GREQAM, Largotec, UPEC.



**A\*Midex**  
Initiative d'excellence Aix-Marseille



**IRD**  
Institut de recherche  
pour le développement



**INRA**  
Institut National de la Recherche Agronomique



## 1) Reminder of the different themes of WP3

- How do we perceive our natural environment?
- How do we adapt to this environment?
- What can we do to preserve or improve our environment?



## Main research themes

- Modelling decision making in the context of risks
- Co-evolution of climate and societies, adaptation to climate change
- Comparison of international governance regimes for climate and biodiversity
- Improved management of ecosystems for conservation and sustainable delivery of ecosystems, valuation of ecosystems

## 2) Projects in which WP3 has been involved

- ❑ Interdisciplinary research projects (within WP3)
  - ✓ 7 projects funded
- ❑ Interdisciplinary research projects (with other WPs)
  - ✓ 4 projects funded
- ❑ Training
  - ✓ 8 workshops + 2 joint IMERA-OT-Med meetings
  - ✓ 3 lectures
- ❑ Interdisciplinary students
  - ✓ 4 PhD + 3 post-docs (+1 with WP2, TWP2)

## Ongoing projects in 2015

- **Interdisciplinary research projects (WP3)**
  - ✓ **Perception of risks**  
(A. Schleyer-Lindenmann) ESPACE, GREQAM  
Measuring Climate Change Perception in India  
and France (**M2C**) (2014) (will present today)

## ❑ Interdisciplinary research projects (WP3)

✓ Perception of risks

✓ **Adaptation of societies to global change (1)**

(A. Kirman) CEREGE, IMBE, GREQAM, ECOLAB

Adaptation of Mediterranean EcoNOmies of Past  
to Hydroclimatic changeS (**AMENOPHYS**) (2014)

Integrated model to study this problem in the  
Mediterranean basin: A socio-economic model  
combined to a climate ecosystem model.

**Post-doc:** D. Contreras

## ❑ Interdisciplinary research projects (WP3)

✓ Perception of risks

✓ **Adaptation of societies to global change (2)**

(C. Albert) IMBE, LPED, ECODEV, IRSTEA, GREQAM

Designing alternative regional scenarios for land-use and agricultural innovative management and biodiversity conservation (**SIMBIOSE**) (2014)

**PhD:** M. Hervé

## ❑ Interdisciplinary research projects (WP3)

- ✓ Perception of risks
- ✓ Adaptation of societies to global change
- ✓ **Global environmental governance**

(S. Maljean-Dubois) CERIC-(S. Thoron) GREQAM

Circulations of Norms and Actor Networks in

Global Environmental Governance (**CIRCULEX**) (2013)

**PhD:** G. Futahazar



- Interdisciplinary research projects (WP3)
- Training & Workshops**
  - ✓ **Workshop on Climatic changes**  
IMERA-Labex OT-Med  
Marseille, October 2014 - May 2015

- ❑ Interdisciplinary research projects (WP3)
- ❑ **Training & Workshops**
  - ✓ Workshop on Climatic changes
  - ✓ **Workshop GEOMEDISLANDS (with WP1)**  
The geoarchaeology of Mediterranean islands  
Organizer: M. Ghilardi (CEREGE) Cargèse July 2015

❑ Interdisciplinary research projects (WP3)

❑ **Training & Workshops**

✓ Workshop on Climatic changes

✓ Workshop GEOMEDISLANDS (with WP1)

✓ **Workshop Arid areas (with WP1)**

“Les zones arides et semi-arides au cours du temps : impact du climat, évolution des écosystèmes et des sociétés”. F. Sylvestre, CEREGE, July 2015.

- ❑ Interdisciplinary research projects (WP3)
- ❑ **Training & Workshops**
  - ✓ Workshop on Climatic changes
  - ✓ Workshop GEOMEDISLANDS (with WP1)
  - ✓ Workshop on Arid areas (with WP1)
  - ✓ **Workshop on interdisciplinarity**  
2 days, organized in May 2015 by Alexia Lopez & Alexandra Schleyer-Lindenmann (OT-Med et ECCOREV)

- ❑ Interdisciplinary research projects (WP3)
- ❑ **Training & Workshops**
  - ✓ Workshop on Climatic changes
  - ✓ Workshop GEOMEDISLANDS (with WP1)
  - ✓ Workshop on Arid areas (with WP1)
  - ✓ Workshop on interdisciplinarity
  - ✓ **Two joint IMERA-OT-MED meetings**  
November and December 2015

## ☐ Training – PhD (ongoing)

- ✓ **Guillaume Futhazar (2013 - ) (has presented in Carry)**  
S. Maljean-Dubois (CERIC), W. Cramer (IMBE)  
Topic: Role and place of the IPBES (Intergovernmental Platform on Biodiversity and Ecosystem Services) in the Mediterranean Region

❑ **Training – PhD (ongoing)**

✓ **Nathalie Boutin (2013 - ) (has presented in Carry)**

S. Hernandez (IMPGT-CERGAM), S. Gachet (IMBE), P. Batteau (CERGAM)

Topic: Territorial management of biodiversity in a context of growing urbanization and intense interactions man-nature. A multi-site analysis

✓ **Mathilde Hervé (2014 - ) (has presented in Carry)**

T. Tatoni (IMBE), C. Albert (IMBE), M. Jacqué (LPED)

Topic: Designing alternative regional scenarios for land-use and agricultural innovative management and biodiversity conservation (SIMBIOSE)

## □ Training – Postdocs (ongoing)

### ✓ Daniel Contreras (2014 - ) (will present today)

A. Kirman (GREQAM)

Topic: Adaptation of Mediterranean EcoNOmies of Past to Hydroclimatic changeS (AMENOPHYS)

### ✓ Andres Curras (2014 - ) (has presented in Carry)

M. Ghilardi (CEREGE) et FMSH

Topic: The onset of Corsican cultural landscapes in the Aleria Plain (Corsica). Integrated palaeoenvironmental approach (« Fernand Braudel » post-doctoral fellowship)



## ❑ Training - Postdocs (in 2015)

### ✓ Ruchi MUDALIAR (2015)

A. Schleyer-Lindenmann (ESPACE) (will present today)

Topic: Adaptation and test of the Climate Change

Perception Inventory in Southern France (« Fernand Braudel » post-doctoral fellowship)

## Lessons from past experiences

- Three themes are covered: perception, adaptation and mitigation.
- The most involved OT-Med research centers: CEREGE, CERIC, ESPACE, GREQAM.
- Move from inter-SHS to better interdisciplinarity with other fields both in funded projects (Amenophys, Simbiose, Fears, Eccotemp, Gesas, SEI-Med) and workshops (GEOMEDISLANDS, Arid areas, IMERA).

<b>WP3 projects interacting with ...</b>	<b>WP1</b>	<b>WP2</b>	<b>WP3</b>	<b>TWP2</b>
<b>M2C / Perception of Risk /2014</b>			X	
<b>AMENOPHYS / Adaptation of societies to global change /2014</b>			X	
<b>SIMBIOSE / Adaptation of societies to global change /2014</b>			X	X
<b>CIRCULEX / Governance/2013</b>	X	X	X	
<b>Colloque GEOMEDISLANDS/2015</b>	X		X	
<b>Workshop on Climatic changes IMERA-Labex OT-Med / 2014-15</b>			X	
<b>Workshop on Arid areas /2015</b>	X		X	
<b>Workshop on Interdisciplinarity /2015</b>			X	

<b>WP3 training interacting with ...</b>	<b>WP2</b>	<b>WP3</b>	<b>TWP2</b>
<b>Boutin Nathalie (PhD, 2013-) /</b>	<b>X</b>	<b>X</b>	
<b>Futahazar Guillaume (PhD, 2013-) / Circulex</b>	<b>X</b>	<b>X</b>	
<b>Hervé Mathilde (PhD, 2014-) / SIMBIOSE</b>		<b>X</b>	<b>X</b>
<b>Contreras Daniel (Post-doc, 2014-) / AMENOPHYS</b>		<b>X</b>	
<b>Curras Andres (Post-doc Braudel, 2014-5)</b>		<b>X</b>	
<b>Mudaliar Ruchi (Post-doc Braudel, 2014-5) / M2C</b>		<b>X</b>	

- How can social sciences contribute to OT-Med objectives?

- ❑ Methodology and policy (already existing and inter SHS)
  
- ❑ Larger interdisciplinary integrated models like:
  - ✓ GESAS (water)
  - ✓ AFORES-Med (forest)
  - ✓ AMENOPHYS (economics)
  - ✓ FEARS (earthquakes) (will be presented today )
  - ✓ SEI-Med (agro ecosystem)